

## VII Phases of the Plan: Timetable, Elements, and Illustrations

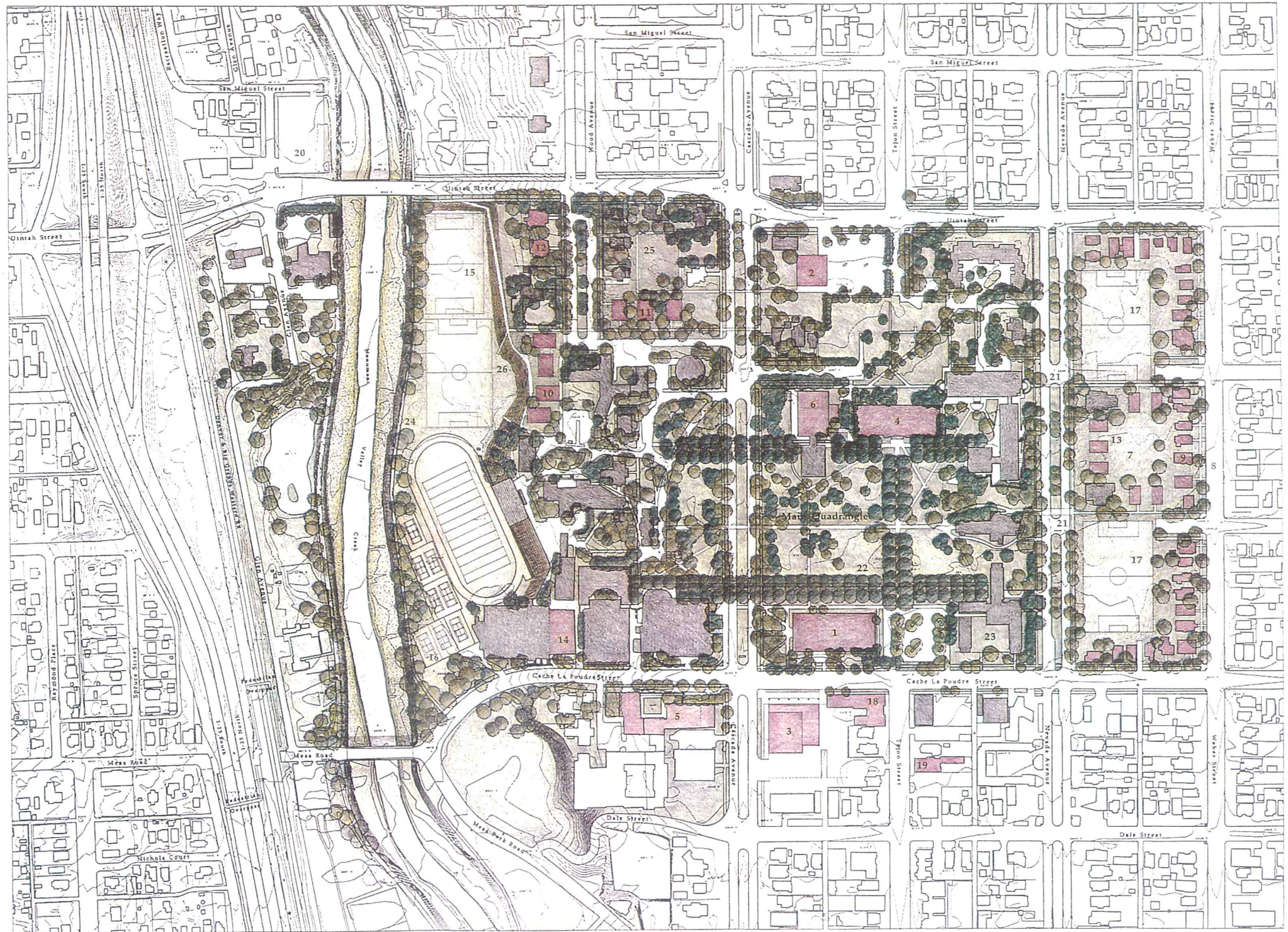
### Phases

The Colorado College Master Plan is intended to be considered in its entirety. Proposed projects are interdependent, and careful sequencing of projects will ensure the greatest early benefits to the College. A comprehensive fundraising campaign will provide the resources to implement the first phase of this Master Plan. Three target dates are envisioned and depicted graphically in the Plan: Phase 1, to be completed in 2005; Phase 2, to be completed in 2015; and Phase 3, to be completed in 2025.

The date of the 2025 Conceptual Plan must be considered simultaneously a goal and a single moment in the life of a constantly developing work in progress. Cognizant and respectful of other development programs in the Colorado Springs community such as the Monument Valley Creek Greenway, the Downtown Action Plan, and the Interstate 25 Expansion Plan, the 2025 date is considered more a motivational target than a completion date. The College looks forward to collaborating with the City in order that both may achieve their respective goals.

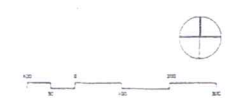
**Phase I Site Plan, 2005**





PHASE I SITE PLAN, 2005

The Colorado College  
 Colorado Springs, Colorado  
 November, 1995





## Phases of the Plan: Timetable, Elements, and Illustrations

### PHASE 1: 2005

#### Academics

- 1 Armstrong Hall Renovation
- 2 North Academic Building and Underground Parking (150 cars)  
Phase 1: Geology and Psychology
- 3 Performing Arts Center and Underground Parking (150 cars)  
Phase 1: New Theater
- 4 Palmer Hall Renovation
- 5 Packard Hall Expansion and Renovation: Art and Music
- 6 Renovation of Tutt Library including Phase 1 Teaching and Learning Center

#### Student Life

- East Campus Development:
- 7 Student Organization Quadrangle
  - 8 Renovate Weber Avenue Existing and Relocated Residences  
for Faculty
  - 9 Relocate Children's Center
- Academic Village:
- 10 Four Western Ridge Residence Halls and Student Commons
  - 11 Three Residence Halls at Academic Village Quadrangle
  - 12 Renovate Existing Houses for Students on Wood Avenue
  - 13 Relocate Sororities

#### Athletics

- 14 Schlessman Pool Renovation
  - 15 New Playing Field at Monument Valley Creek
  - 16 Relocate Two Tennis Courts
- East Campus Development:
- 17 Two Athletic Fields

#### Administration

- 18 Renovate Spencer Center: Development, Human Resources, and  
Business Office
- 19 Relocate Central Services to the Whitney Electric Building

#### Traffic and Parking

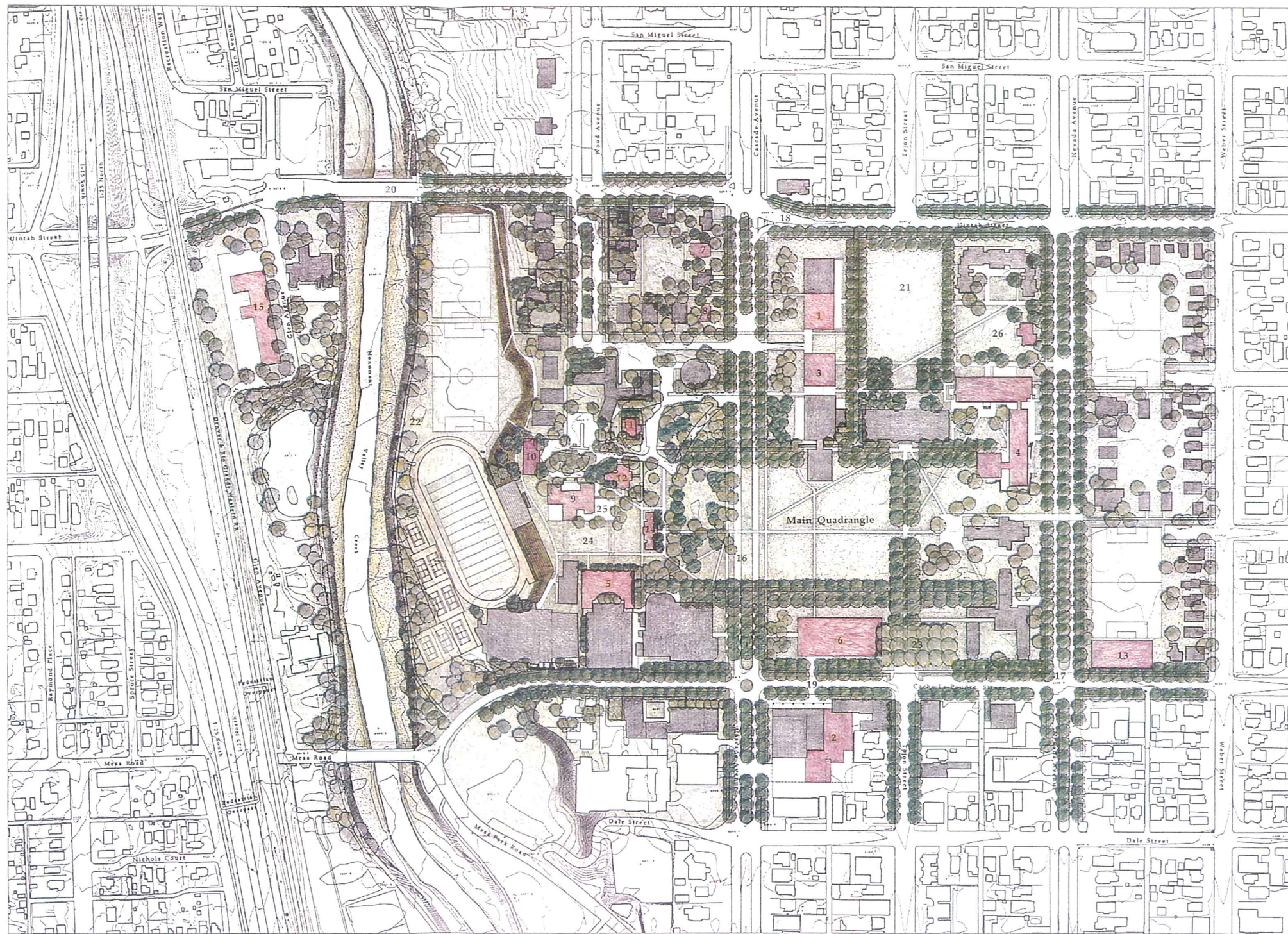
- 20 Temporary Remote Lot at Uintah: 75 Cars  
Permanent Above-grade Parking at Remote Lot: 300 Cars
- East Campus Development:
- 21 Establish Two Pedestrian Crossings

#### Landscape

- Main Quadrangle Landscape:
- 22 Allées and Paths
  - 23 Slocum Yard
  - 24 Riparian Landscape at Monument Creek, Phase 1
- Academic Village:
- 25 Academic Village Landscape: Arboretum
  - 26 Western Ridge Landscape

**Phase II Site Plan, 2015**





PHASE II SITE PLAN, 2015

The Colorado College  
 Colorado Springs, Colorado  
 November, 1995

THOMPSON AND ROSE, PLANNERS  
 CHILD ASSOCIATES, INC., LANDSCAPE ARCHITECTURE

FIVE LOW STREET, SUITE 100, CAMBRIDGE, MASSACHUSETTS 02138  
 TEL: 617.876.9900 FAX: 617.876.9922



## Phases of the Plan: Timetable, Elements, and Illustrations

### PHASE 2: 2015

#### Academics

- 1 Completion of North Academic Building, Phase 2:  
Education, Environmental Studies, Sport Sciences, Teaching and Learning Resource Center, Writing Center, Computing Center
- 2 Completion of Performing Arts Center, Phase 2:  
Drama Offices, Classrooms, and Workshops  
Dance
- 3 North Addition to Tutt Library
- 4 Renovation of Science Facilities
- 5 Cossitt Hall Renovation

#### Student Life

- 6 Completion of Armstrong Hall Renovation, Phase 2:  
Main Theater converted to Student Life Use  
Armstrong 32 converted to Student Life Use  
Remainder of Drama moves to Performing Arts Center  
Completion of Academic Village, Phase 2:
- 7 Relocation and Renovation of Mierow House
- 8 Relocation and Renovation of Dern House, the Hulbert Center for Southwest Studies  
Renovation of Historic Residence Halls:
- 9 Bemis Hall
- 10 McGregor Hall
- 11 Montgomery Hall
- 12 Ticknor Hall

#### Athletics

- 13 Completion of East Campus, Phase 2:  
Recreation Center

#### Administration

- 14 Cutler Hall Renovation
- 15 Central Services Building

#### Traffic and Parking

- 16 Cascade Avenue Corridor, from Dale to Uintah
- 17 Nevada Avenue Corridor, from Dale to Uintah
- 18 Uintah Street Corridor, from Weber to Interstate 25
- 19 Cache La Poudre Corridor, from Weber to Monument Valley Creek
- 20 Uintah Street Automobile, Pedestrian, and Bicycle Bridge

#### Landscape

- 21 Cascade, Nevada, Uintah, and Cache La Poudre Corridor Landscapes
- 22 Palmer North Quadrangle Landscape
- 22 Riparian Landscape at Monument Valley Creek, Phase 2

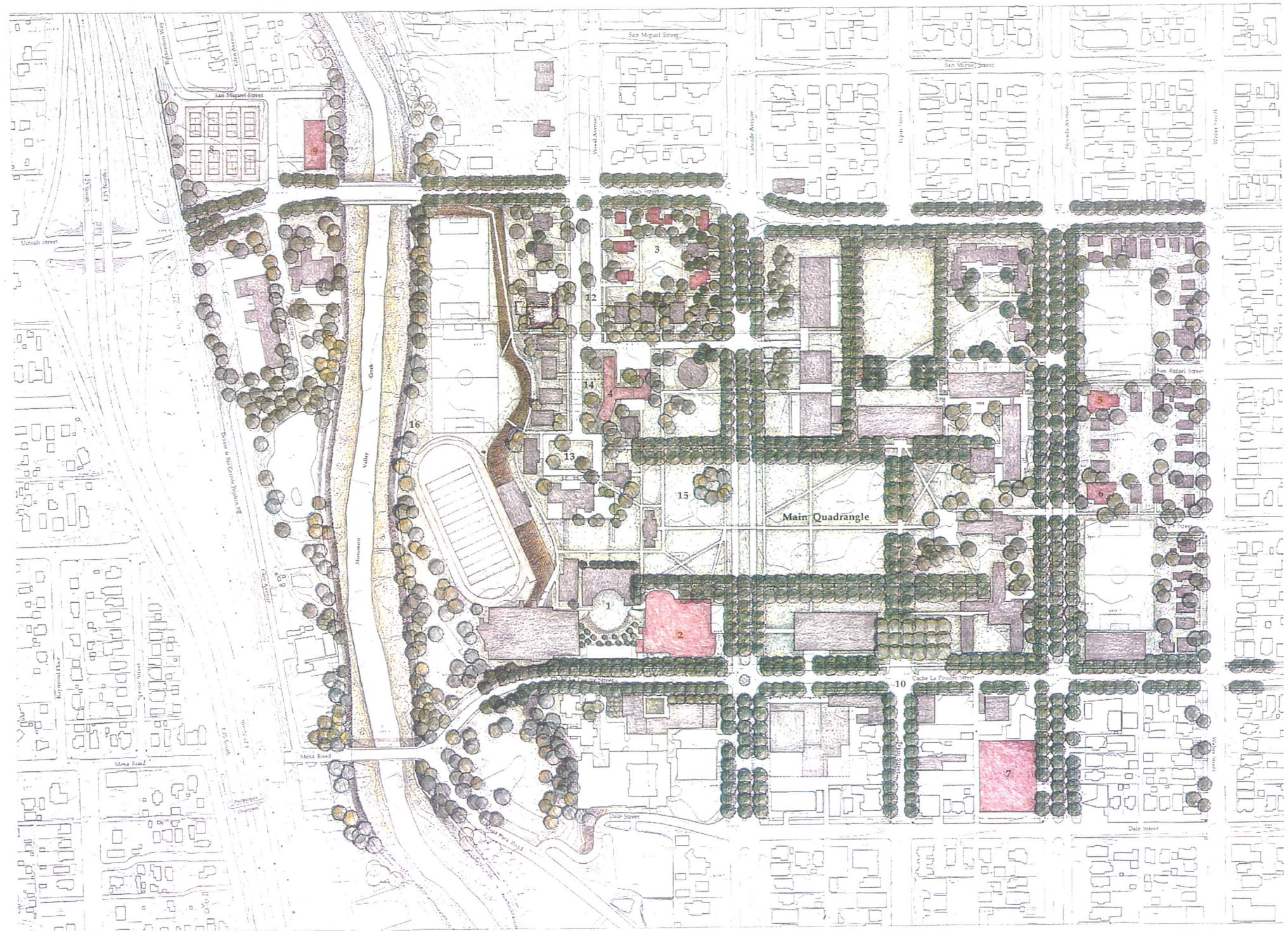
■

	Main Quadrangle Landscape, Phase 2:
23	Entry Bosque
24	Cutler Lawn
25	Removal of Taylor
26	Arthur House Renovation and Courtyard Landscape



**Phase III Site Plan, 2025**





PHASE III SITE PLAN, 2025  
 The Colorado College  
 Colorado Springs, Colorado  
 November, 1995

THOMPSON AND ROSE, PLANNERS  
 CHILD ASSOCIATES, INC., LANDSCAPE ARCHITECTURE

Five Len Street Suite 100 Cambridge Massachusetts 02138  
 Tel: 617 876 9200 Fax: 617 876 9222



## Phases of the Plan: Timetable, Elements, and Illustrations

### PHASE 3: 2025

#### Student Life

- 1 Cossitt Restoration for Student Life: Amphitheater and Courtyard
- 2 Renovate Worner Campus Center for Student Life
- 3 Renovate Language Houses on Wood Avenue
- 4 Loomis Renovation: Removal of West Wing
- 5 Renovate Jackson House
- 6 Renovate Lennox House

#### Athletics

- 7 Relocation of Ice Rink to South Campus with Underground Parking (200 cars)
- 8 Tennis Courts North of Uintah
- 9 New Field House North of Uintah

#### Traffic and Parking

- 10 Completion of Cache La Poudre and Tejon Pedestrian Retail Zone

#### Landscape

- 11 Removal of Tutt Library Addition in Main Quadrangle  
Residential Landscapes, Academic Village
- 12 Wood Avenue Landscape
- 13 Bemis Quadrangle
- 14 Loomis Hall, West Lawn
- 15 Completion of Main Quadrangle Landscape, Phase 3
- 16 Completion of Riparian Landscape at Monument Valley Creek, Phase 3