



FURNITURE STANDARDS PROGRAM

DECEMBER 2023



**interior
environments**



interior[®] environments

From the beginning of our story, in 1999 Interior Environments has lived at the intersection of the unexpected: hard work running with imagination; big dreams displayed through small details; playful concepts with high-tech edges; human curiosity paired with innovative thinking. At our core, Interior Environments is all about creating spaces that reflect the fascinating people that use them while enhancing their experience.

We really listen, seeing our work as “bridgebuilder” between your vision and the farthest reaches of our creative imagination.

COMPANY STATISTICS

- Established in 1999
- 125 Employees
- 3 Locations across the Nation
- Annual Revenue: \$75 Million
- 3rd Largest Independent Allsteel Dealer in the US



We create workspaces of enduring value that are as unique as our clients.

Process

Team

Service

Our process and delivering the best client experience is every bit as important as our product. We bring value by understanding our customers journey and aligning our process to match your needs. We really get to know you by listening and strategizing. We streamline the design process to bring your vision to life and exceed expectation and deliver results.

Dedicated Team



Jeanette Callas
Design Strategist
330.590.7094 | jcallas@ieoffices.com

Jeanette will be your main point of contact from early discovery, into final order, and on through the life of our partnership. IE believes providing you with a dedicated individual builds trust and allows you to feel clear and confident in every step of the process.



Eric Wiebers
Managing Partner
563.299.1423 | ewiebers@ieoffices.com



Chelsea Lawrence
Creative Strategist
970.250.1873 | clawrence@ieoffices.com



Lauren Sims
Sr. Project Designer
847.644.3271 | lsims@ieoffices.com



Brandy Pellegrini
Senior Project Designer
720.615.1383 | bpellegrini@ieoffices.com



Kasee Horton
Project Coordinator
720.275.0842 | khorton@ieoffices.com



Steve Lucero
Project Manager
slucero@ieoffices.com



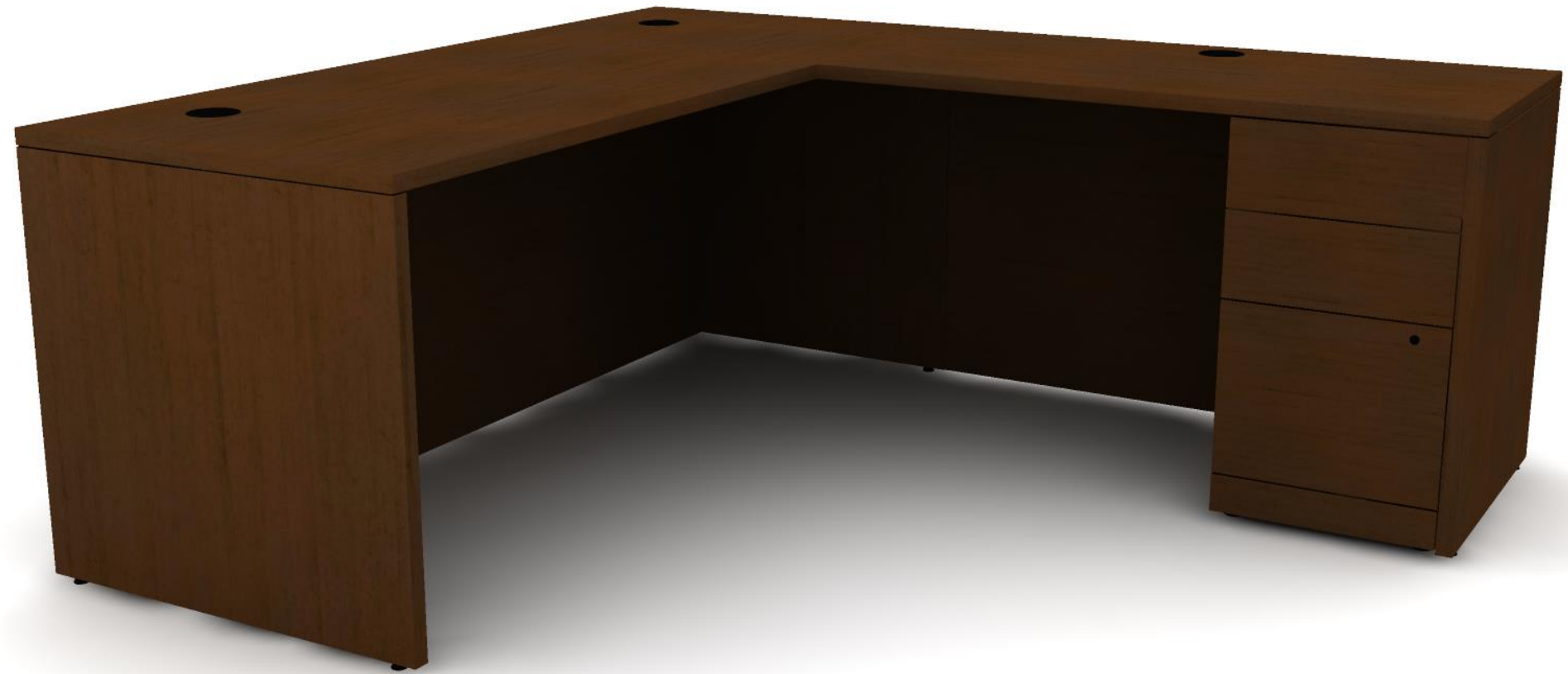
Product Selections

Desk Option: L-Shape

LAMINATE FINISH



MOCHA



HON 10500 SERIES

D-1: L-shaped laminate desk including 30x72 front desk with full recessed modesty and 24x48 return with full modesty and Box/Box/File pedestal storage
Unit is non-handed

Desk Option: Single Ped Desk

LAMINATE FINISH



MOCHA



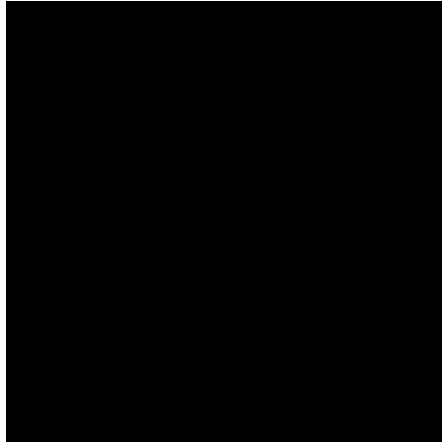
HON 10500 SERIES

D-2: 72x30 rectangular laminate desk with full recessed modesty and Box/Box/File pedestal storage

Chair Options: Task Chair

RENDERING

FRAME FINISH



BLACK

UPHOLSTERY



ATTIRE / SABLE



HON IGNITION 2.0 SERIES

CH-1: Ergonomic task chair with standard synchro-tilt mechanism, seat slider, height & width adjustable arms, mesh back and upholstered seat

Chair Options: Guest Chair

RENDERING

WOOD FINISH



MOCHA

UPHOLSTERY



ATTIRE / SABLE



HON CAMBIA SERIES

CH-2: Wood frame guest chair with upholstered seat and back
Grade A upholstery

Chair Options: Training Chair – **NO LONGER AVAILABLE**

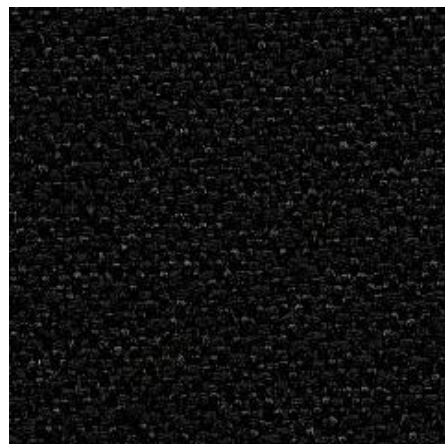
REFERENCE IMAGES

FRAME FINISH



BLACK

UPHOLSTERY



VA FABRIC / BLACK



HON ASSEMBLE SERIES
CH-3: Mesh back flip and nest chair with arms

HON ASSEMBLE SERIES
CH-3a: Mesh back flip and nest chair armless

Table Options: Meeting Table

RENDERING

LAMINATE FINISH



MOCHA

METAL FINISH



BLACK



HON 10500 SERIES
T-1: 36" round table with metal X-base

Table Options: Training Table

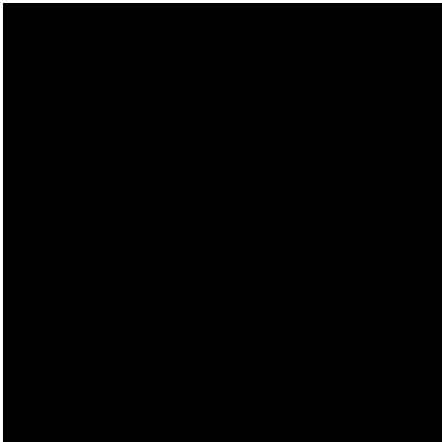
REFERENCE IMAGE

LAMINATE FINISH



MOCHA

METAL FINISH



BLACK



HON MOTIVATE SERIES

- T-2: 24x60 laminate flip & nest table on T-legs with casters
- T-3: 24x60 laminate stationary table on T-legs with casters

Storage Options: Bookcases

REFERENCE IMAGE

LAMINATE FINISH



MOCHA



HON 10500 SERIES

BC-1: 2-high bookcase, 36" wide, 13-1/8" deep, 29-5/8" high

BC-1: 3-high bookcase, 36" wide, 13-1/8" deep, 43-3/8" high

BC-1: 4-high bookcase, 36" wide, 13-1/8" deep, 57-1/8" high

BC-1: 5-high bookcase, 36" wide, 13-1/8" deep, 71" high

Storage Options: Storage Cabinets

RENDERINGS

LAMINATE FINISH



MOCHA



CAB-1



CAB-2

HON 10500 SERIES

CAB-1: Storage cabinet with doors, 36" wide, 24" deep, 29.5" high, includes one adjustable shelf

CAB-2: Storage cabinet with doors, 36" wide, 24" deep, 67" high, includes five adjustable shelves

Storage Options: Credenzas

REFERENCE IMAGES

LAMINATE FINISH



MOCHA



CR-1



CR-2

HON 10500 SERIES

CR-1: Credenza with lateral file with two drawers and storage cabinet with one adjustable shelf, 72" wide, 24" deep

CR-2: Credenza with two lateral files with two drawers each, 72" wide, 24" deep

Storage Options: Conference Credenzas

REFERENCE IMAGE

LAMINATE FINISH



MOCHA



HON PRESIDE SERIES

CR-3: Credenza with four doors, includes two hidden drawers behind center doors
Optional trash bin

Storage Options: Lateral Files

REFERENCE IMAGES

LAMINATE FINISH



MOCHA



LF-1



LF-2



LF-3



LF-4

HON 10500 SERIES

LF-1: 2-drawer laminate lateral file, 36" wide, 20" deep

LF-2: 2-drawer laminate lateral file, 36" wide, 24" deep

LF-3: 3-drawer laminate lateral file, 36" wide, 20" deep

LF-4: 4-drawer laminate lateral file, 36" wide, 20" deep

Storage Options: Under-desk Storage

REFERENCE IMAGES

LAMINATE FINISH



MOCHA



FF-1



LF-5



MP-1

HON 10500 SERIES

FF-1: 2-drawer laminate undersurface file, 15-5/8" wide, 22-3/4" deep, no finished top

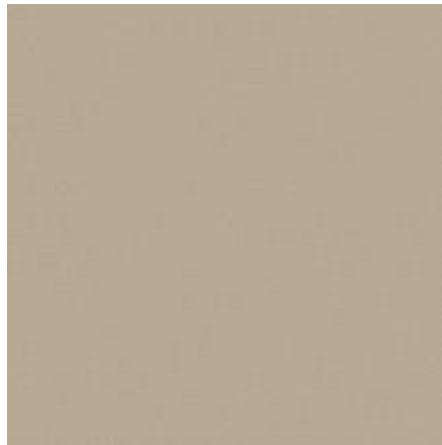
LF-5: 2-drawer laminate undersurface lateral file, 36" wide, 20" deep, no finished top

MP-1: Mobile laminate pedestal with Box & File drawer, 15-5/8" wide, 18-7/8" deep

Storage Options: Metal Filing

REFERENCE IMAGE

METAL FINISH



GREIGE



HON 210 SERIES

VF-1: 4-drawer vertical files, letter sized files, with lock, 15" wide, 28.5" deep

Whiteboard Option

REFERENCE IMAGE



GHENT M1

MB-1: Porcelain magnetic markerboard with aluminum frame and marker tray
Comes with one marker and eraser

Create space.