

1) Stravinsky *Petrouchka*, First Part, *Shrove-Tide Fair*

Vivace ♩=138

Musical score for the first part of *Shrove-Tide Fair*. It consists of two staves of music in bass clef. The first staff contains measures 8 and 9, with a *ff* dynamic marking. The second staff contains measures 10, 11, and 12, with a *ff* dynamic marking and a *cresc.* marking. The music features complex rhythmic patterns and triplets.

2) Stravinsky *Petrouchka*, First Part, *Shrove-Tide Fair*

Vivace ♩=138

Musical score for the first part of *Shrove-Tide Fair*, measures 54 and 55. The first staff contains measure 54 with a *ff* dynamic marking and a *ben marc.* marking. The second staff contains measure 55 with a *cresc.* marking. The music features complex rhythmic patterns and triplets.

3) Stravinsky *Petrouchka*, Second Part, *Masqueraders*

Allegro moderato ♩ ♩.=72

Musical score for the second part of *Masqueraders*. It consists of two staves of music in bass clef. The first staff contains measures 239 and 240, with a *ff* dynamic marking and a *sim.* marking. The second staff contains measure 241 with a *ff* dynamic marking and a *sim.* marking. The music features complex rhythmic patterns and triplets.

4) Rossini William Tell

Allegro vivace ♩=152

Musical score for Rossini's William Tell, measures 243-273. The score is written in bass clef with a key signature of two sharps (F# and C#). The tempo is Allegro vivace with a quarter note equal to 152 beats per minute. The music features a variety of articulations and dynamics. Measure 243 starts with an 'arco' marking and a forte dynamic. Measures 249 and 256 feature fortissimo dynamics. The score includes slurs, accents, and various bowing or playing techniques indicated by 'H' and 'V' markings.

5) Mendelssohn Violin Concerto

Allegro molto appassionato ♩=108

Musical score for Mendelssohn's Violin Concerto, measures 58-65. The score is written in bass clef with a key signature of two sharps (F# and C#). The tempo is Allegro molto appassionato with a quarter note equal to 108 beats per minute. The music is characterized by strong dynamics, including fortissimo and sforzando markings. The score includes slurs and accents, and features a variety of rhythmic patterns and articulations.

6) Beethoven Symphony No. 9

Allegro ma non troppo ♩=88

236 **H** **V**
ff

242

248 **I**
p

254 **V**
più piano *pp* *pp* **6**

7) Beethoven Symphony No. 9

Allegro ma non troppo ♩=88

444



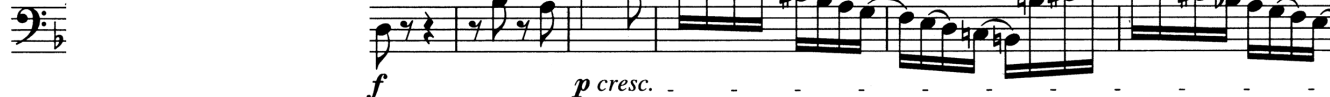
454



462



494



503



8) Beethoven Symphony No. 9

Presto ♩=160

472



480



488



9) Beethoven Symphony No. 9
Recitativo

Presto $\text{♩} = 66$
f Selon le caractère d'un Recitativ mais, in tempo. *dimin.*



16
p



30



Tempo I
f ff



41



ritard. *poco adagio*
dimin.



50



Tempo I
f
arco



60



dimin.



Tempo I
mp



70



cresc. *ff* *f*
Allegro assai $\text{♩} = 80$
1 3



81



Tempo I
f sf



89



10) Beethoven Symphony No. 9

Allegro assai ♩=80

120

129

138

cresc. - - p

cresc. - - p

V A V V

Detailed description: This block contains three staves of musical notation in bass clef with a key signature of one sharp (F#). The first staff (measures 120-128) features a melodic line with slurs and a dynamic marking of *cresc. - - p*. The second staff (measures 129-137) continues this melodic line with similar dynamics. The third staff (measures 138-146) includes accents (V) and a fermata (A) over a measure, with dynamics *cresc. - - p*.

11) Beethoven Symphony No. 9

Allegro assai ♩=126

425

433

441

457

463

469

476

K sempre l'istesso tempo

sf sf

Vc. 10 Vc. *ff*

sf sf

4

Detailed description: This block contains seven staves of musical notation in bass clef with a key signature of two flats (Bb). The first staff (measures 425-432) shows a rhythmic pattern with a dynamic marking of *ff* and the instruction 'K sempre l'istesso tempo'. The second staff (measures 433-440) features slurs and accents (V) with dynamics *sf sf*. The third staff (measures 441-456) includes a ten-measure rest for the Violoncello (Vc.) and a dynamic marking of *ff*. The fourth staff (measures 457-462) continues the rhythmic pattern. The fifth staff (measures 463-468) shows a similar pattern. The sixth staff (measures 469-475) includes slurs and accents (V) with dynamics *sf sf*. The seventh staff (measures 476-481) concludes with a four-measure rest (4).

486

ff

492

ff

500

mf

508

mf

515

ff

543 M

ff OFF

550

557

564

ff

12) Beethoven Symphony No. 9

Allegro energico $\text{♩} = 84$

Allegro energico e sempre ben marcato $\text{♩} = 84$

655 γ Vc. ff

666

670 O ff sf f f

708 Q^{m} ff

713

717

Detailed description: This image shows a page of musical notation for the bassoon part of the final movement of Beethoven's Symphony No. 9. The score is written in bass clef with a key signature of two sharps (D major) and a 2/4 time signature. It consists of six staves of music. The first staff begins at measure 655 with a dynamic marking of ff and a γ symbol. Above the staff, there is a 'Vc.' marking with a double bar line. The music features a series of eighth-note patterns, often beamed together. The second staff starts at measure 666. The third staff starts at measure 670 and includes a dynamic marking of ff followed by sf , f , and f . Above the staff, there is a circled 'O' marking. The fourth staff starts at measure 708 and includes a dynamic marking of ff and a Q^{m} marking. The fifth staff starts at measure 713. The sixth staff starts at measure 717. The notation includes various articulations such as slurs and accents.

13) Beethoven Symphony No. 9

Allegro ma non tanto $\text{♩} = 120$

760 *Allegro ma non tanto* $\text{♩} = 120$

773 *pp*

790 *S arco BRUSH*

798 *f sf f f f ff f f p cresc.*

806 *ff sf f f*

14) Beethoven Symphony No. 9

Allegro ma non tanto $\text{♩} = 120$

894 *f f ff*

900 *f f f*

906 *ff ff ff*

912 *ff ff* *Maestoso* $\text{♩} = 60$